



What a few months it has been! Just thinking back to the beginning of March. Our family was holidaying at a local Caravan Park for the March Long Weekend. Fast forward two weeks, then we are isolating with severe travel restrictions, social distancing and hand washing by the minute.

But- Cheers to the Best State in the Best Country! Let's look forward with great anticipation.

It looks like the Planning changes for the Metropolitan area are still on track for a September 2020 implementation. This is where, amongst other things, many of the hundreds of different zones across Adelaide will be simplified and made consistent from council to council. We will provide some more details in our upcoming editions.

Thanks for your feedback and responses to our Newsletters and Competitions We trust you will continue to enjoy them. Please keep in touch.

Ed - Michael

LASER SCANNER - P40

A Message from Michael

We are very excited about the performance of the latest addition to our fleet of equipment, the Leica P40 Scan Station. It's not only the new hardware technology that is impressive, but the software tools available to us now, are super cool.

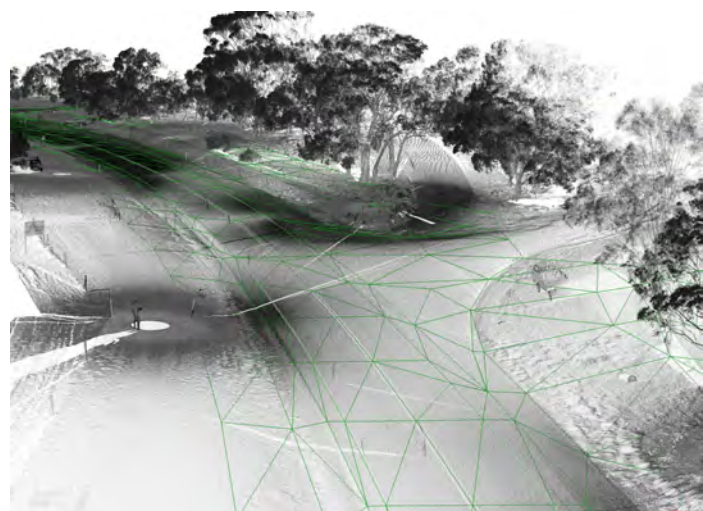
The rate of information captured is fantastic, as well the clarity of detail is amazing.

The P40 is designed for large scale sites and projects, and is capable of performing photorealistic, survey accurate models of homes, commercial buildings, construction sites, difficult to measure or complex shapes and objects. Gaining a full 3D model can provide a great basis for planning, design or presentation.

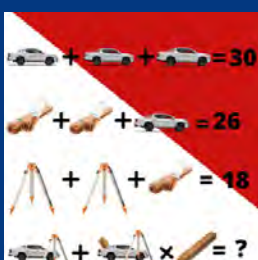
The P40 is also a great assessment tool to determine if infrastructure is built as per design by comparing 3D design models with the 3d scanned models.

The picture below shows an intersection on the Horrocks Highway where the P40 captures all on road detail without our surveyors putting themselves in harm's way, on the road.

We would love to talk to you about how this technology can benefit your current and new projects.



A puzzle from our Facebook Page. Have a try!



Michael Gear Surveys



ACCESSING YOUR PROPERTY FOR A SURVEY

A Message from Annette

To undertake a survey on your property, whether it be a Boundary/ Identification Survey, Land Division, Detail or Contour Survey (just to name a few), a Surveyor will need to gain access to your property.

This does not mean you need to be on site or interact with the Surveyor. As long as the Surveyor can move readily around the property with no locked gates and pets (particularly dogs) that will impede their movement.

Our approach will always be as invited guest and we will work around your preferred time frames as much as possible, to make the process as simple as we can.

For any survey to do in relation to your boundary, you will find that the surveyor will be initially locating permanent markers, that they will find around your neighbourhood to assist with verifying information about your property.

This locating may take the surveyor into neighbouring streets and sometimes across valleys.

None the less, they are on your job, to ensure that your exact boundary can be precisely located and then marked.

Visit the Michael Grear Surveys website for more information and past issues of The Survey Datum @ www.mgsurveys.com.au

Quote:

No one has ever become poor by giving.

- Anne Frank

WHERE WE HAVE BEEN?

A Message from Jenny

Thanks to those who had a try at our Summer Ed Competition - "Where in South Australia would you find the largest bird?" The answer we were looking for was Kimba - The Giant Galah.

At Michael Grear Surveys, we are fortunate to travel all over South Australia to survey many interesting and beautiful sites.

With a lot of people currently quarantined, self-isolating or social distancing.

What an opportunity to share some photographs of some of these locations.

How many of these places do you recognise?

Let us know.

BTW - We now have a facebook page.

We'd love it if you would 'like' and Share us!



Adelaide Office:

5 Gulfview Road Blackwood SA 5051 Tel: 08 8278 8732

Whyalla Office

17 B - 19 A Darling Tce Whyalla SA 5600 Tel: 08 8644 2040

Email : admin@mgsurveys.com.au

www.mgsurveys.com.au



Michael Grear Surveys

Find us on Facebook

